



NEW
AYGO X

| | | | | | | | | | | | |
|-----------------------|-------------|-------------------|--------------------|-------------------|--------|---------------|---------|--------------|----------------|--------------|------------------------|
| Keep up to Date | | Build your Aygo X | | Book a Test Drive | | Find a Dealer | | <div></div> | | | |
| <div>DRIVE TALL</div> | | <div>A</div> | | <div>Y</div> | | <div>G</div> | | <div>O</div> | | <div>X</div> | |
| Design | Personality | Interior | Connected Services | Space | Safety | Grades | Colours | Accessories | Specifications | Equipment | Additional information |



DRIVE TALL

Great things come in small packages. The Aygo X is an unapologetically compact car bursting with attitude. It defies the norm, offering the confidence of a crossover, but with the exclusive features of a city car. A raised body, large alloy wheels and higher driving position bring the city up to your level. Don't just follow trends – create them. Look the city in the eyes, connect with the road and see the streets from a fresh perspective with the Aygo X.





HOTTEST CROSSOVER IN TOWN

Turn up the heat across town with the bold and unmistakable design of the Aygo X. Sophisticated, distinct and unquestionably cool, the bi-tone bodywork exudes originality and hints at a playful character. Striking 18" alloy wheels and oversized wheel arches give Aygo X a wider stance, projecting a confident presence. Let the eye-catching LED headlights powerfully light your way wherever you go.

Images are not UK specification.
Specification may vary between grades, please see grade pages.





DRIVEN BY IMPULSE

Innovations to let you take the city by storm. Highly responsive and controllable, the Aygo X is the ultimate car for navigating modern urban spaces and beyond. This compact city crossover boasts a tight turning circle which makes it agile and easy to park – even on busy streets. The manual or automatic gearbox react effortlessly to your driving style, making city driving easy and enjoyable.

Images are not UK specification.



CITY PARKING JUST GOT SIMPLER

Confidently park in the city thanks to a rear view camera and intelligent parking sensors.

Specification may vary between grades, please see grade pages.



BLUE SKY DRIVING.
FREE YOUR MIND

The open air represents total freedom. Open the cool canvas roof of the Aygo X to truly connect with the city using your senses. Feel the warmth of the sun on your face, wind in your hair and enjoy the sights and sounds of bustling urban life around you. Let the light flood in and cruise the streets in style.



Images are not UK specification.
Canvas roof comes as standard on Air Edition and is optional on Edge and Exclusive grades.



X

CHILI RED

BOLD AND DARING

Audacious chili is the spice we turn to when we're feeling daring. Inspired by the unexpected hot hue of the fieriest spice, Aygo X in unapologetic Chili Red dares you to be different, makes you feel alive and inspires you to embrace the fun of the open road.



X

JUNIPER BLUE
COOL AND CREATIVE

Sharp, clear and bursting with vibrancy, juniper communicates a laser-driven focus. Aygo X in cool Juniper Blue clears the way for freedom of thought, encouraging creativity and a sense of optimism.

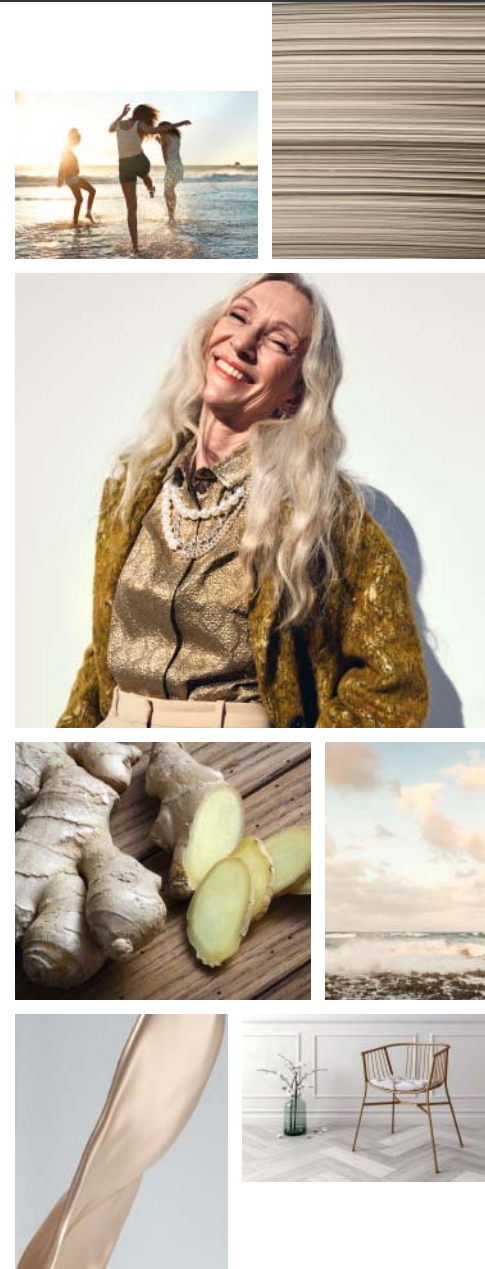


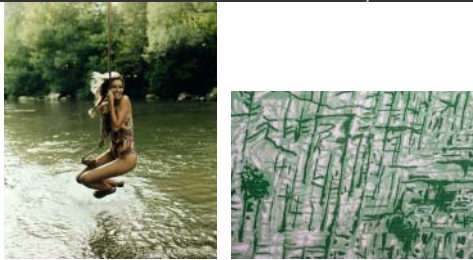


X

GINGER BEIGE
WARM AND DISTINCTIVE

However subtle, a hint of ginger can never be mistaken. Characterised by complexity, distinctive ginger has a unique ability to warm the spirit and spark the senses. The premium Ginger Beige Aygo X ignites a feeling of determination, giving you the confidence to drive your own way.





X

CARDAMOM GREEN SOPHISTICATED AND DISTINGUISHED

One of the most distinguished spices, the unique aroma of cardamom never fails to surprise and delight the senses. Aygo X in Cardamom Green reflects these qualities and inspires a smooth sense of sophistication and originality. Enjoy a new zest for life with Aygo X in Cardamom Green.





INVITE THE CITY IN

The Aygo X is designed with a wealth of human touches built to prompt easy interaction between driver and passengers. Interior highlights match the exterior colours to give a distinctive look, including the dashboard and centre consoles. Up close, the seats show the “X” symbol discreetly stitched right into the fabric. Spacious and comfortable, the intelligent cabin offers room for your entire day in the city. Thanks to increased width, this compact crossover has generous shoulder space in the front with exceptional visibility over the roads.

Images are not UK specification. Specification may vary between grades, please see grade pages.



IN SYNC WITH YOU AND YOUR CITY

More than a city car, Aygo X is an extension of your lifestyle. Toyota Smart Connect+ seamlessly keeps your phone and car in sync, with wireless charging for constant on-the-go power. A large 9" HD touch screen displays everything you need – avoid city hold-ups using cloud navigation and real-time road events, while smart parking makes stopping a breeze. Use the MyT app to remotely operate the cabin, managing door control with a touch. Aygo X is like your smartphone on wheels.

Images are not UK specification.
Specification may vary between grades, please see grade pages.





CAPACITY TO SURPRISE

Compact on the outside, but spacious on the inside, Aygo X is full of surprises. With up to 231 litres boot capacity, you'll find boot space built for flexible lifestyles. Enjoy smart design for easy loading. Your Aygo X has room for every day in the city and beyond.



CONFIDENCE AT EVERY TURN

Stay focused and safe throughout the city. Aygo X is equipped with a wealth of enhanced safety features to ensure you're always confident on the roads. Toyota Safety Sense* with driving and parking-assistance technologies keep you constantly in check. Whether on the motorway, in the city or parking – you're in safe hands with Aygo X.

* Standard on all grades.



PRE-COLLISION SYSTEM (PCS)

When the possibility of a collision is detected, PCS alerts the driver with audio and visual warnings and brake assistance is activated. If the driver fails to brake in time, the brakes automatically engage to reduce the likelihood and severity of an impact. In addition, early detection of pedestrians (day or night) and cyclists (day only) is also possible. Intersection Turn Assist and Emergency Steering Assist, provide further driver support in the daytime by delivering greater safety when turning at junctions and enhanced steering assistance and stability when making evasive manoeuvres.

LANE TRACE ASSIST

Designed to make motorway driving safer. It keeps you centred in your lane and if you start to drift, steering assist will gently steer your car to correct its course.

ADAPTIVE CRUISE CONTROL

Keeps you at a minimum pre-set distance from the vehicle in front. If this distance falls, the system reduces your speed and eventually the brakes will be applied and brake lights activated. Aygo X is equipped with Road Sign Assist and can also recognise speed limits on your driving route and suggest any necessary adjustments.

X

PURE

The perfect combination for the city – a boldly styled exterior balanced with multimedia connectivity designed for modern lifestyles.



- 17"Alloy wheels (5-double-spoke)
- Pre-Collision with Cyclist Detection, Day & Night-time Pedestrian Detection
- 7" Toyota Touch® Multimedia system with Smartphone integration incl Apple CarPlay & Android Auto™
- Reversing Camera

- TOP FEATURES
- Intelligent Adaptive Cruise Control (iACC)
 - Emergency steering Assist
 - Lane Trace Assist (LTA)
 - Driver Attention Alert
 - Intersection Turn Assist
 - Road Sign Assist (RSA)
 - Manual air conditioning

- 3-spoke Leather steering wheel
 - Leather gear shift
- Front power windows
 - Auto headlights
- 4.2" Colour Multi-information screen
 - eCall emergency call system

- OPTIONAL FEATURES
- Essential Protection Pack
 - 17" Gloss Black Alloys
 - Polycarbonate Scuff Plates (Tokyo Red or Black)
 - Styling Pack (Tokyo Red or Chrome)

Apple CarPlay is a trademark of Apple Inc.



X

EDGE

With the latest tech and unique bi-tone colours, drive like everyone’s watching.



TOP FEATURES (ADDITIONAL TO PURE)

- 18" Bi-tone Dark Grey & Machined-face Alloy wheels (4-double-spoke)
 - Bi-tone Paint (Available in 6 colours)
 - 8" Toyota Touch® Multimedia system with Smartphone integration incl Apple CarPlay & Android Auto™
- Privacy Glass
 - Front fog lights
 - Auto wipers
 - Gloss black front grille
 - Automatic air conditioning
 - LED Daytime running lights

OPTIONAL FEATURES

- Essential Protection Pack
- 18" Matt Black Alloy Wheels
- 18" Black Machined Alloy Wheels
- Polycarbonate Scuff Plates (Tokyo Red or Black)



Seat Design – For the Pure White and Brass Gold the bolsters have body coloured stitching. For the Juniper Blue, Cardamon Green, Ginger Beige & Chili Red the whole bolsters are body coloured.

X

EXCLUSIVE

Be the envy of the town with a sophisticated design and wealth of premium and innovative features.



TOP FEATURES (ADDITIONAL TO EDGE)

- 9" HD Toyota Smart Connect multimedia system with Wireless Smartphone integration incl Apple CarPlay & Android Auto™

— Wireless mobile phone charger

— Front & Rear parking sensors

— Partial Synthetic Leather seats

— Smart Entry & Push-button start
- LED Projector headlights

— LED Daytime running light guide

— Emergency steering Assist

— Light blue ambient lighting in centre console

— Bi-tone Metallic paint as standard.

— Available in 4 colours

OPTIONAL FEATURES

- Essential Protection Pack

— 18" Matt Black Alloy Wheels

— 18" Black Machined Alloy Wheels

— Polycarbonate Scuff Plates (Tokyo Red or Black)



X

AIR EDITION

Bring out your sense of fun with distinctive Body Coloured accents.



TOP FEATURES (ADDITIONAL TO EDGE)

- Available in 5 colours
- 18" Matt Black Alloy wheels (4-triple-spoke) with Brass Gold, Chili Red & Ginger Beige wheel inserts
- Exterior accents (Brass Gold as shown. Chili Red & Juniper Blue have Red accents. Ginger Beige & Cardamon Green have Ginger accents)
- Interior accents (Body coloured air vents & gear shift surround)
 - Canvas Roof
- Front & Rear parking sensors

OPTIONAL FEATURES

- Essential Protection Pack
- 18" Matt Black Alloy Wheels
- 18" Black Machined Alloy Wheels
- Polycarbonate Scuff Plates (Tokyo Red or Black)

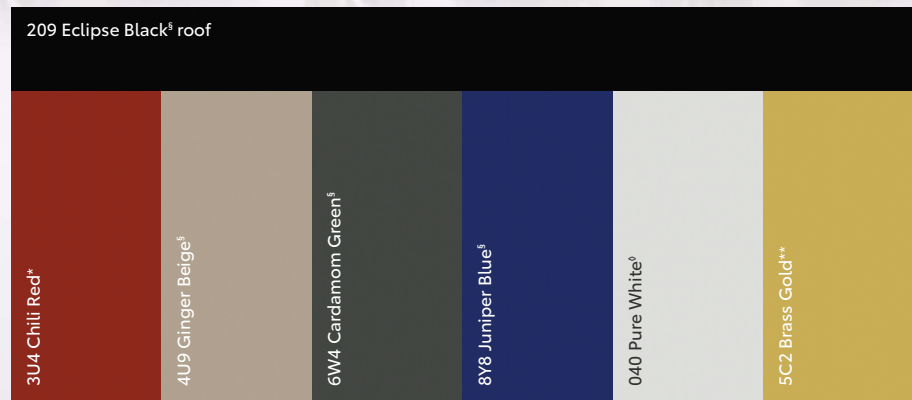
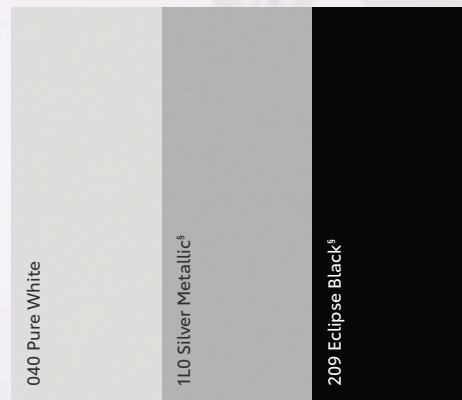


Seat Design – For the Brass Gold the bolsters have body coloured stitching. For the Juniper Blue, Cardamon Green, Ginger Beige & Chili Red the whole bolsters are body coloured.



Monotone colour choices (Pure Grade Only)

Bi-tone colour choices



* Pearlescent paint. * Metallic paint. † Only available on Edge. ** Only available on Edge and Air Edition.





CHROME STYLING PACK ACCESSORIES

The Chrome Pack draws out subtle, sophisticated highlights of Aygo X’s unmistakable exterior.



FRONT BUMPER GARNISH

This distinctive chrome garnish gives the front bumper and grille extra definition and a refined look.

SIDE SILLS

Highlight the aerodynamic contours of your Aygo X with a touch of perfectly integrated chrome.

REAR LOWER BOOT GARNISH

A flash of chrome at the lower edge of the boot adds a final touch of style.

Displayed with accessory wheels;
18" alloy wheels – matte black.

Displayed with accessory wheels;
18" alloy wheels – machined-face black.



TOKYO RED STYLING PACK ACCESSORIES

The Red Pack is distinctive and confident. It’s the ideal way to emphasise Aygo X’s refined style.



FRONT BUMPER GARNISH

Make a subtly powerful statement by adding this stylish red garnish to your Aygo X’s front bumper.

SIDE SILLS

This touch of red underscores the contours of your Aygo X, and integrates seamlessly.

REAR LOWER BOOT GARNISH

A subtle signature for your Aygo X’s boot, conveying a sense of sportiness.

Displayed with accessory wheels;
17" alloy wheels – glossy black.

Styling packs only available on Pure Grade.



ESSENTIAL PROTECTION PACK

Your Aygo X is a striking city car and you'll want to keep it that way. The Protection Pack helps avoid damage from every day usage, keeping your car in pristine condition.



1. DOOR HANDLE PROTECTION FILM

Reliable protection to prevent minor scratching of the paintwork around your car's door handle when entering your vehicle. Made of tough transparent self-adhesive film, the film is shaped for an exact fit.

2. MUD FLAPS

Keep your Aygo X looking fresh with mud flaps for both front and rear wheel arches.

3. BOOT LINER

This anti-slip boot liner seamlessly fits your Aygo X, shielding it from dirt, spills or muddy paws

RUBBER FLOOR MATS*

Resistant, tailored and high quality. Our rubber floor mats will help to keep the inside of your Aygo X nice and clean.

* No image available.



STICKER SETS

Emphasise your car's powerful contours with side & rear and roof & bonnet sticker sets in bold Chili Red.



Chili Red decoration sticker set side & rear



Chili Red decoration sticker set roof & bonnet

For the full range of accessories, please visit the Toyota website.

Sticker Sets available as Centre Fitment only.

SPECIFICATIONS

| ENVIRONMENTAL | 1.0 Petrol (72hp) 5-speed Manual | 1.0 Petrol (72hp) Automatic |
|--------------------------------------|----------------------------------|-----------------------------|
| CO ₂ Combined WLTP (g/km) | 109–110 | 113–114 |
| Fuel Economy – Combined WLTP (mpg) | 55.97–58.85 | 54.67–56.5 |
| Fuel Grade – recommended | 95 or more (octane) | 95 or more (octane) |
| Fuel tank capacity | 35 | 35 |
| Euro class | EURO 6 AP | EURO 6 AP |
| Carbon monoxide, CO (mg/km) | 245.6 | 336.7 |
| Hydrocarbons, THC (mg/km) | 22 | 29.7 |
| Hydrocarbons, NMHC (mg/km) | 19.3 | 26.6 |
| Nitrogen Oxides, NOx (mg/km) | 9.8 | 16.7 |
| Sound Level Drive by (dB(A)) | 67.0 | 69.0 |

Figures are provided for comparability purposes; only compare fuel consumption and CO₂ figures with other cars tested to the same technical procedures. These figures may not reflect real life driving results. All vehicles are certified according to the World Harmonised Light Vehicle Test Procedure (WLTP). CO₂ figures (and hence car tax and recommended ‘on the road’ prices) may differ from information printed before 1 April 2020, due to a change in the official method of calculation. Choice of options and accessories fitted (pre-registration) may affect the official CO₂ figures, car tax and ‘on the road’ price.

| ENGINE | | |
|-------------------------|-------------------------------|-------------------------------|
| Engine Code | 1KR-FE | 1KR-FE |
| Number of Cylinders | 3 cylinder, in line | 3 cylinder, in line |
| Valve Mechanism | DOHC 12 valve with dual VVT-i | DOHC 12 valve with dual VVT-i |
| Fuel Injection System | Direct multipoint injection | Direct multipoint injection |
| Displacement (cc) | 998 | 998 |
| Bore x Stroke (mm x mm) | 71.0 x 84.0 | 71.0 x 84.0 |
| Compression Ratio | 11.8:1 | 11.8:1 |
| Maximum output (kW@rpm) | 53/6000 | 53/6000 |
| Maximum output (DIN hp) | 72 | 72 |
| Maximum torque (Nm@rpm) | 93/4400 | 93/4400 |

| TRANSMISSION | 1.0 Petrol (72hp) 5-speed Manual | 1.0 Petrol (72hp) Automatic |
|-------------------|----------------------------------|-----------------------------|
| Transmission Type | Manual | Automatic |
| Gear 1 | 3.545 | – |
| Gear 2 | 2.047 | – |
| Gear 3 | 1.310 | – |
| Gear 4 | 1.027 | – |
| Gear 5 | 0.850 | – |

| PERFORMANCE | | |
|-------------------------|------|------|
| Maximum Speed (mph) | 98 | 94 |
| Acceleration 0–62 (mph) | 14.9 | 14.8 |
| Drag Coefficient | 0.32 | 0.32 |

| SUSPENSION | | |
|------------|------------------|------------------|
| Front | MacPherson Strut | MacPherson Strut |
| Rear | Torsion Beam | Torsion Beam |

| BRAKES | | |
|--------|----------------------------|----------------------------|
| Front | Ventilated disc 1-cylinder | Ventilated disc 1-cylinder |
| Rear | Drum | Drum |

SPECIFICATIONS

| WEIGHTS & TOWING CAPACITY | 1.0 Petrol (72hp) 5-speed Manual | 1.0 Petrol (72hp) Automatic |
|-----------------------------------|----------------------------------|-----------------------------|
| Gross Train Weight – Total (kg) | 1360 | 1360 |
| Gross Vehicle Weight – Total (kg) | 1360 | 1360 |
| Kerb Weight / Unladen Weight (kg) | 945–995 | 965–1015 |
| Gross Vehicle Weight – Front (kg) | 815 | 815 |
| Gross Vehicle Weight – Rear (kg) | 745 | 745 |

| EXTERIOR DIMENSIONS | 5-door Hatchback | INTERIOR DIMENSIONS | 5-door Hatchback |
|----------------------|------------------|----------------------|------------------|
| Exterior length (mm) | 3700 | Number of Seats | 4 |
| Exterior width (mm) | 1740 | Interior length (mm) | 1700 |
| Exterior height (mm) | 1525 | Interior width (mm) | 1420 |
| Front tread (mm) | 1540 | Interior height (mm) | 1205 |
| Rear tread (mm) | 1520 | | |
| Front overhang (mm) | 730 | | |
| Rear overhang (mm) | 540 | | |
| Wheelbase (mm) | 2430 | | |

| LUGGAGE VOLUME | 5-door Hatchback |
|---|------------------|
| Luggage Capacity (laden to tonneau cover) l (VDA) | 231 |
| 4 seat mode (laden to roof) | 269 |
| 2 seat mode (laden to tonneau cover) | 545 |
| 2 seat mode (laden to roof) | 829 |

| WHEELS | Pure | Edge | Exclusive | Air Edition |
|--|------|------|-----------|-------------|
| 17" Alloy wheels (5-double-spoke) | ● | – | – | – |
| Tyre Repair Kit (TRK) | ● | ● | ● | ● |
| 18" Bi-tone Dark Grey & Machined-face Alloy wheels (4-double-spoke) | – | ● | ● | – |
| 18" Matt Black Alloy wheels (4-triple-spoke) with Brass Gold accents | – | – | – | ● |



● = Standard ○ = Optional – = Not available

EQUIPMENT

| EXTERIOR STYLING | Pure | Edge | Exclusive | Air Edition |
|---------------------------------|------|------|-----------|-------------|
| LED Projector headlights | — | — | ● | — |
| Projector halogen headlights | ● | ● | — | ● |
| LED Daytime running light | ● | ● | — | ● |
| LED Daytime running light guide | — | — | ● | — |
| Rear LED light guide | ● | ● | ● | ● |
| Black upper front grille | ● | — | — | — |
| Gloss black upper front grille | — | ● | ● | ● |
| Gloss Black door mirrors | ● | ● | ● | ● |
| Privacy Glass | — | ● | ● | ● |
| Bi-tone paint | — | ● | ● | ● |
| Brass Gold accents | — | — | — | ● |

| EXTERIOR COMFORT | Pure | Edge | Exclusive | Air Edition |
|---|------|------|-----------|-------------|
| Smart Entry & Push-button start | — | — | ● | — |
| Auto headlights | ● | ● | ● | ● |
| Auto wipers | — | ● | ● | ● |
| Canvas roof | — | ○ | ○ | ● |
| Electric heated power-adjustable door mirrors | ● | ● | ● | ● |
| Follow-me-home headlights | ● | ● | ● | ● |
| Remote door lock | ● | ● | ● | ● |

| INTERIOR STYLING | Pure | Edge | Exclusive | Air Edition |
|---|------|------|-----------|-------------|
| 3-spoke Leather steering wheel | ● | ● | ● | ● |
| Light blue ambient lighting in centre console | — | — | ● | — |

| INTERIOR COMFORT | Pure | Edge | Exclusive | Air Edition |
|---|------|------|-----------|-------------|
| 12v power outlet – Front | ● | ● | ● | ● |
| 4.2" multi-information screen | ● | ● | ● | ● |
| Adaptive Cruise Control (ACC) switch on steering wheel | ● | ● | ● | ● |
| Adjustable Speed Limiter (ASL) switch on steering wheel | ● | ● | ● | ● |
| Audio, multimedia, telephone & voice recognition switches on steering wheel | ● | ● | ● | ● |
| Lane Departure Alert (LDA) switch on steering wheel | ● | ● | ● | ● |
| Automatic High Beam (AHB) on/off switch | ● | ● | ● | ● |
| Child safety door lock | ● | ● | ● | ● |
| ECO-driving Indicator | ●* | ●* | ●* | ●* |
| Electric Power Steering (EPS) | ● | ● | ● | ● |
| Height-adjustable, reclining & sliding driver seat | ● | ● | ● | ● |
| Manual tilt steering wheel | ● | ● | ● | ● |
| Pollen air filter | ● | ● | ● | ● |
| Wireless mobile phone charger | — | — | ● | — |

* Automatic transmission only. Not available on Manual.

| STORAGE | Pure | Edge | Exclusive | Air Edition |
|-------------------------|------|------|-----------|-------------|
| Soft tonneau cover | ● | ● | ● | ● |
| Front & rear cup holder | ● | ● | ● | ● |

● = Standard ○ = Optional — = Not available

EQUIPMENT

| MULTIMEDIA | Pure | Edge | Exclusive | Air Edition |
|--|------|------|-----------|-------------|
| 4 speakers | ● | ● | ● | ● |
| 7" Toyota Touch® Multimedia system with Smartphone integration incl Apple CarPlay & Android Auto™ | ● | — | — | — |
| 8" Toyota Touch® Multimedia system with Smartphone integration incl Apple CarPlay & Android Auto™ | — | ● | — | ● |
| 9" HD Toyota Smart Connect multimedia system with Wireless Smartphone integration incl Apple CarPlay & Android Auto™ | — | — | ● | — |
| Bluetooth® Connectivity | ● | ● | ● | ● |
| Digital Audio Broadcast (DAB) | ● | ● | ● | ● |
| USB connector | ● | ● | ● | ● |

| SAFETY | Pure | Edge | Exclusive | Air Edition |
|---|------|------|-----------|-------------|
| Toyota Safety Sense consisting of: | | | | |
| – Pre-Collision System with Day and Night Pedestrian, Daytime Cyclist Detection | ● | ● | ● | ● |
| – Intelligent Adaptive Cruise Control (iACC) | ● | ● | ● | ● |
| – Emergency Steering Assist | ● | ● | ● | ● |
| – Lane Trace Assist (LTA) | ● | ● | ● | ● |
| – Road Sign Assist (RSA) | ● | ● | ● | ● |
| – Automatic High Beam (AHB) | ● | ● | ● | ● |
| – Driver Attention Alert | ● | ● | ● | ● |
| – Intersection Turn Assist | ● | ● | ● | ● |
| eCall emergency call system | ● | ● | ● | ● |
| Supplemental Restraint System (SRS) airbags – 6 airbags | ● | ● | ● | ● |
| Passenger airbag on/off -switch | ● | ● | ● | ● |

| SAFETY | Pure | Edge | Exclusive | Air Edition |
|---|------|------|-----------|-------------|
| Reversing camera with static guide lines | ● | ● | ● | ● |
| Front and Rear parking sensors | — | ○ | ● | ● |
| Adjustable Speed Limiter (ASL) | ● | ● | ● | ● |
| Hill-start Assist Control (HAC) | ● | ● | ● | ● |
| Anti-lock Braking System (ABS) with Electronic Brake force Distribution (EBD) | ● | ● | ● | ● |
| Traction Control (TRC) | ● | ● | ● | ● |
| Steering-assisted Vehicle Stability Control (S-VSC) | ● | ● | ● | ● |
| Tyre Pressure Warning System (TPWS) | ● | ● | ● | ● |
| Front fog lights | — | ● | ● | ● |
| LED High mounted stop light | ● | ● | ● | ● |
| Front and Rear seat belt reminder | ● | ● | ● | ● |
| ISOFIX child restraint system | ● | ● | ● | ● |
| Emergency Brake-light Signal (EBS) | ● | ● | ● | ● |

| PERFORMANCE, TRANSPORT & PROTECTION | Pure | Edge | Exclusive | Air Edition |
|-------------------------------------|------|------|-----------|-------------|
| Floor mats | ● | ● | ● | ● |
| Stop & Start System | ● | ● | ● | ● |
| Locking wheel nuts | ● | ● | ● | ● |

| PACKS | Pure | Edge | Exclusive | Air Edition |
|---|------|------|-----------|-------------|
| Parking Pack (Front and Rear parking sensors) | — | ○ | ● | ● |
| Canvas Roof | — | ○ | ○ | ● |

● = Standard ○ = Optional — = Not available

OWNING YOUR AYGO X

Servicing your Toyota
Toyota Service Pricing means you will be sure to know the cost of your service up front. Expertly trained technicians using only genuine Toyota parts will carry out your service at one of over 200 Authorised Toyota Service Centres. The technicians will advise you on the correct service for your car based on the car’s age, mileage and service history.

For more information visit toyota.co.uk/owners/servicing-and-aftercare/service-mot-maintenance

Service Plans
Inflation-proof pricing with a monthly or one-off payment plan means one less thing to worry about. With Toyota Service Plans the price you’re quoted is guaranteed for the duration of your plan. The service, parts and labour are all paid for either in monthly instalments or as a one-off payment at the beginning of your plan.

For more information visit toyota.co.uk/owners/servicing-and-aftercare/service-mot-maintenance

Toyota Price Repairs
We offer transparent prices on a number of repair items for your Toyota giving you peace of mind when it comes to managing costs. Also don’t forget we only use genuine Toyota parts, all of which come with at least 12 months’ warranty (some even offer unlimited mileage warranties); and your car will always be dealt with by a trained Toyota technician.

For more information visit toyota.co.uk/owners/parts-accessories/parts

MyT
Whether you’re a long-term owner or have recently taken delivery of a new Toyota, there are lots of reasons to join MyT. Packed with time-saving and convenient features, MyT ensures everything you need to manage your vehicle ownership is in one place. You’ll also gain access to My Rewards where you can enjoy great offers and discounts from big brands on everything from family days out to pampering as well as everyday deals.

For more information visit toyota.co.uk/mytoyota or download the MyT app now available on iTunes® and Android.



Toyota Accessories
Toyota accessories are designed and manufactured with the same care, quality and attention to detail as Toyota vehicles. Tailor-made for your Toyota, they fit perfectly and add a personal touch of style, comfort and practicality. Also, because they’ve been tested under the most severe conditions, you can have complete confidence in their reliability and durability.

For more information visit toyota.co.uk/owners/parts-accessories/parts

Toyota Roadside Assistance
When you buy a new Toyota you will automatically receive 12 months’ Roadside Assistance in the UK and Europe, free of charge. After the first year you can renew this cover at £76 for 12 months or £135 for 24 months* by calling 0344 701 6201 or visiting toyota.co.uk/roadside-assistance/

Get up to 10 years/100,000 miles Toyota Warranty*
Every new Toyota comes with a 3 year manufacturer warranty followed by a 12 months / 10,000 miles additional warranty, with every qualifying service.

For full details, please ask your official Toyota Centre or visit toyota.co.uk/relax

Corrosion Cover
The 12-year unlimited mileage cover protects against rust perforation affecting sheet metal body panels as a result of a manufacturing fault. This warranty can also be transferred to any future owner throughout the 12-year period.

Rust and Paint Cover
The 3-year unlimited mileage cover protects against defects and surface rust as a result of a manufacturing fault.

Toyota Business Centre
Our Toyota Business Centre network promise you same-day access to a business manager or dedicated sales executive. With business offers and interactive wholelife cost modelling tools which consider emissions, fuel economy, servicing, insurance and residual value data, our advisers can accurately compare tax costs against any competitor. Whenever servicing is due, we can offer fixed-price servicing, free local vehicle collection and delivery (with wash and vac).

Special offers, fixed-price fleet servicing, specialist fleet insurance, business daily hire, Toyota Fleet Financial Services, extended test drives and a dedicated Business Centre Network are just some of the services business customers can expect from Toyota.

For more information visit toyota.co.uk/businesscustomers

Toyota Motor Insurance
Toyota Motor Insurance is available for Toyota owners at competitive premiums. To obtain details of the benefits included and to arrange a quotation, please contact your local Toyota Centre or call 0800 350 500.

Flexible Finance from Toyota Financial Services
All our plans offer easy budgeting and peace of mind, and **AccessToyota** brings these benefits together in one flexible package.

Toyota Financial Services, Great Burgh, Burgh Heath, Epsom, Surrey, KT18 5UZ.

Finance subject to status to over 18s only. Indemnities may be required. Terms and conditions apply.

TFS is authorised and regulated by the Financial Conduct Authority.



* Prices correct at time of going to print.

TOYOTA

ENVIRONMENTAL

CHALLENGE 2050

Announced in 2015, our global Environmental Challenge 2050 comprises of six challenges. They cover every aspect of our business, our exploration of new products and technologies, and our role as an enabler for individuals and communities to learn about and improve the natural world around them.

For more information regarding Toyota Environmental Challenge please visit: toyota.co.uk/world-of-toyota/environment/environmental-challenge-2050 or contact your local Toyota dealer.

CO₂0

CHALLENGE 1

NEW VEHICLE – ZERO CO₂ EMISSIONS

By 2050, we want to reduce the CO₂ emissions from our vehicles by 90% compared to our 2010 levels. To achieve this, we will promote the development of new vehicles with low or zero carbon emissions, and do everything we can to increase the uptake of these vehicles.

CO₂0

CHALLENGE 3

PLANT ZERO CO₂ EMISSIONS

To reduce carbon emissions at our manufacturing plants, we are focusing on improving the technologies we use and switching to alternative power sources. We are committed to making our facilities more energy-efficient and adopting renewable energy sources such as solar and wind, as well as low-carbon power such as hydrogen energy.

CHALLENGE 5

ESTABLISHING A RECYCLING-BASED SOCIETY AND SYSTEMS

We’ve been working on the challenge of resource recycling for 40 years, with the result that 95% of every Toyota Aygo X is now reusable and recoverable. In addition, we offer new and innovative ways of returning your vehicle when it eventually reaches ‘the end of the road’. We are pursuing full life cycle management for battery recovery & reuse and remanufacturing green parts.



* Toyota’s LCA methodology, which is applied to our passenger vehicles, was reviewed and approved by TÜV Rheinland and has been certified to comply with ISO14040/14044 standards.

CO₂0

CHALLENGE 2

LIFE CYCLE ZERO CO₂ EMISSIONS

We are working to create more environmentally friendly designs – and then analysing and refining them to ensure the lowest possible environmental impact throughout the vehicle’s entire life cycle*.

CHALLENGE 4

MINIMISING AND OPTIMISING WATER USAGE

To minimise water usage, we have started to collect rainwater at our manufacturing plants. We have also developed purification methods so that the water we do use can either be used again or returned safely into the local supply.

CHALLENGE 6

ESTABLISHING A FUTURE SOCIETY IN HARMONY WITH NATURE

To preserve and enhance our co-existence with the natural world, we are organising reforestation and tree planting, green urban schemes and other environmental initiatives, both at our own sites and in the wider world. Our aim is to establish a society where people and nature coexist in harmony.





INSPIRING THE
WORLD TO MOVE

Over 85 years of innovation have brought us our greatest mission yet: giving the freedom of movement to humankind. That’s why Toyota is the Worldwide Official Mobility Partner of the International Olympic Committee and the International Paralympic Committee and proud partner of Team GB and Paralympics GB.

We are committed to making movement better for everyone, whether that be across a country, a city or across a room, because when you are free to move, anything is possible.

START YOUR
IMPOSSIBLE



TOYOTA NEW AYGO X

Images are not UK specification.





NEW AYGO X DRIVE TALL

www.toyota.co.uk

While every effort is made to reproduce accurate information, we reserve the right to change specifications, equipment and availability without prior notice. This brochure cannot be regarded as infallible (some of the vehicles shown may not be to exact UK specification), and as such does not constitute an offer for sale of any particular vehicle or specification. For the latest specification and availability, we ask that you contact your local Toyota Centre. Vehicle body colours may differ slightly from the printed images in this brochure.

Quoted mpg and CO₂: Figures are provided for comparability purposes; only compare fuel consumption and CO₂ figures with other cars tested to the same technical procedures. These figures may not reflect real life driving results. All vehicles are certified according to the World Harmonised Light Vehicle Test Procedure (WLTP). Please visit the Vehicle Certification Agency website for the latest information. Please contact your local Toyota Centre for further information.

The use of the term 'Toyota Accessories' should not be taken to imply that the products on the accessory pages are actually manufactured by the Toyota Motor Corporation or Toyota (GB) PLC. Toyota (GB) PLC is continually updating and changing specifications of accessories and reserves the right to do so at any time without prior notice.

© 2023 by Toyota Motor Europe NV/SA ('TME'). No part of this publication may in any way be reproduced without the prior written approval of Toyota (GB) PLC.



Toyota UK



@ToyotaUK

GBNGV-AYGOX January 2023